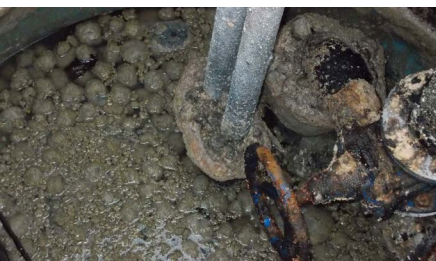




**Follow the three P rule! Don't flush these down your drains.**



- **Cleaning rags and cloths**
- **Syringes, hypodermic needles**
- **Wet wipes**
- **Nappies**
- **Sanitary items**
- **Clothing, including underwear**
- **Medicines and medical equipment**
- **Fats, oil and grease (F.O.G.)**

**Syringes, needles and medical equipment**, should be disposed of in a sharps box and taken to a pharmacist for safe disposal. Your Council may also have a collection method.

**Nappies, sanitary items and wet wipes**, even if they say flushable, this is often not the case. These items do not disintegrate properly. They usually form a mass of stringy ragging that gets caught up and causes breakages and blockages.

**F.O.G.** These separate from water and congeal within the pump station's chamber, coating the pump and floats. This causes blockages and pump failure. F.O.G. can form large solid blocks which stop the pump station from operating.

**We have a solution to stop blockages altogether and it doesn't involve costly tankers. Get in touch to find out more. [enquiries@durapump.co.uk](mailto:enquiries@durapump.co.uk).**